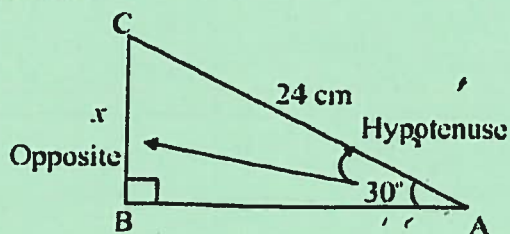


TRIGONOMETRY ASSIGNMENT

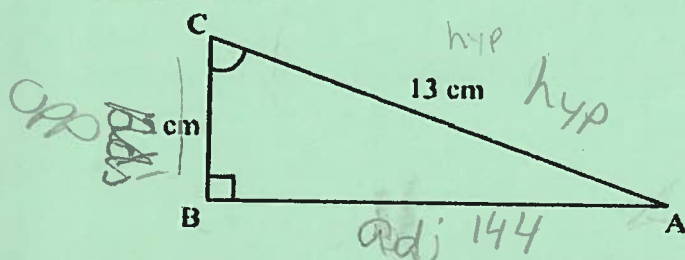
16

1. Decide whether to use sine, cosine, tangent, or the Pythagorean relationship to find x . Solve for x .



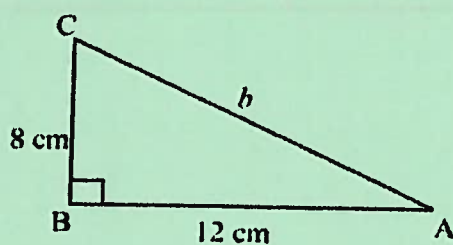
$$x = 12$$

2. Decide whether to use sine, cosine, tangent, or the Pythagorean relationship to find $\angle C$. Solve for $\angle C$.



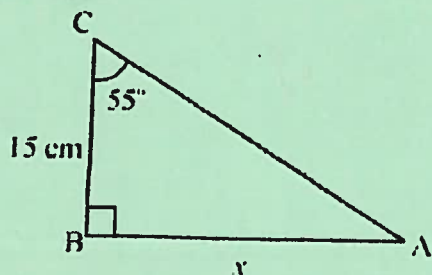
$$\angle C = 67.3$$

3. Decide whether to use sine, cosine, tangent, or the Pythagorean relationship to find b . Solve for b .



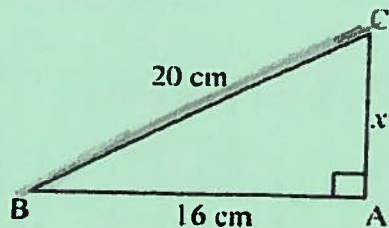
$$b = 14.4$$

4. Decide whether to use sine, cosine, tangent, or the Pythagorean relationship to find x . Solve for x .



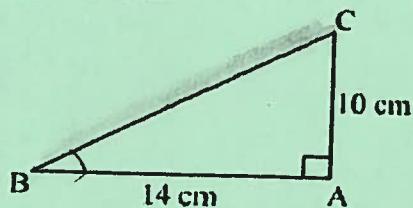
$$x = 21.4$$

5. Decide whether to use sine, cosine, tangent, or the Pythagorean relationship to find x . Solve for x .



$$b = 12$$

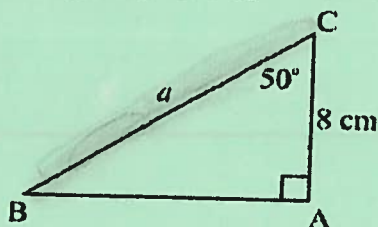
6. Decide whether to use sine, cosine, tangent, or the Pythagorean relationship to find $\angle B$. Solve for $\angle B$.



$$\angle B = 35.546$$

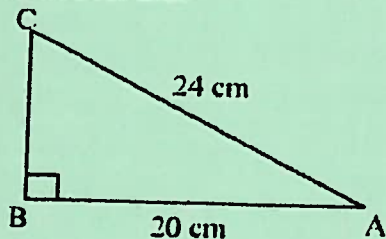
$$\sqrt{296} = 17.2$$

7. Decide whether to use sine, cosine, tangent, or the Pythagorean relationship to find a . Solve for a .



$$C = 12.4$$

8. Decide whether to use sine, cosine, tangent, or Pythagorean relationship to find $\angle C$. Solve for $\angle C$.



$$\angle C = 56.4$$